

Pipette Calibration



Pipette Calibration Solutions

ISO8655 Compliant

Efficient calibration

Traceable results

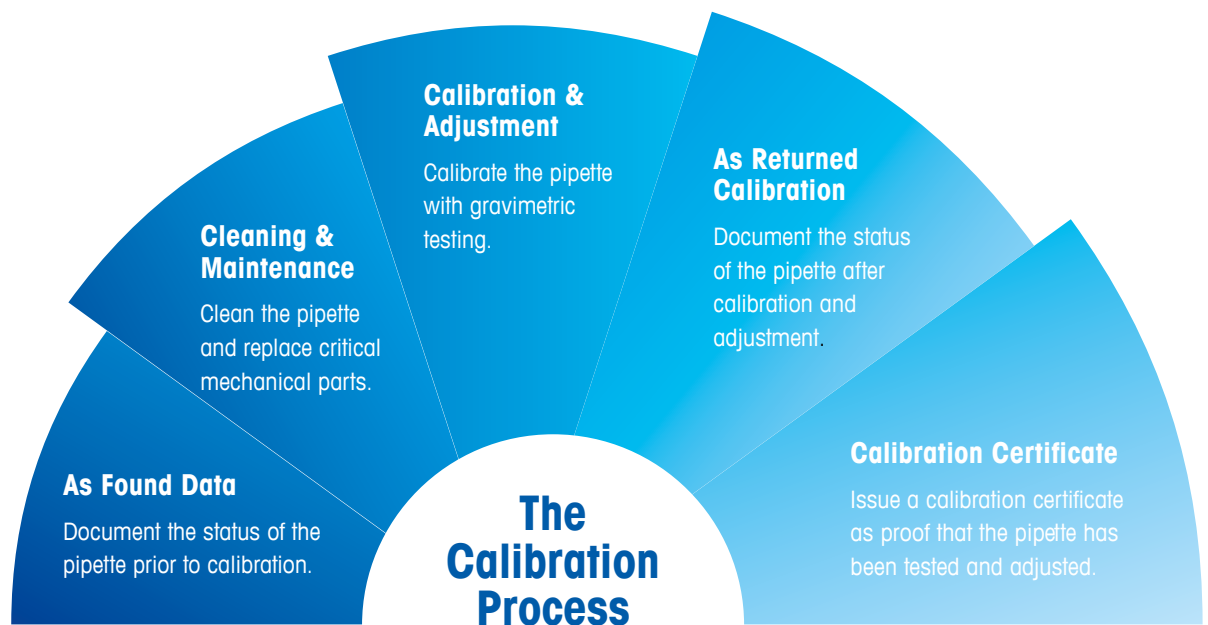
Calibrating Pipettes for Traceable Results

METTLER TOLEDO

Efficient Calibration of Pipettes for Fast & Traceable Results

Whether you're an accredited in-house lab or service provider, pipette calibrations must be performed accurately, efficiently and must fulfill regulatory guidelines such as ISO8655.

METTLER TOLEDO offers comprehensive solutions for pipette calibration. Our reputation for weighing, pipettes and process-oriented software, combined with our expertise of over 20 METTLER TOLEDO calibration labs worldwide results in a user-oriented, efficient and compliant calibration portfolio like no other manufacturer.



METTLER TOLEDO's weighing reputation combined with process oriented software, results in an efficient, reliable and compliant pipette calibration process according to ISO8655.



ISO 8655 compliant



ISO 17025 accredited labs calibrate according to ISO8655 for volumetric devices. Our solutions are fully compliant from the balance for measurements to software, with reports for a fast and secure process.

Calibration expertise



Profit from METTLER TOLEDO's experience and competence with solutions tailored to your needs. With over 20 METTLER TOLEDO accredited calibration labs worldwide.

Weighing & pipette specialist



METTLER TOLEDO's unmatched reputation in high quality balances and pipettes, results in trustworthy, accurate and reliable pipette calibrations, day after day.

Fast Micro Pipette Calibration Down to 1 μl Volumes

Calibration of smallest volumes down to 1 μl are a challenge to do accurately and efficiently. The XPE26PC was designed by specialists and is the benchmark in many calibration laboratories world-wide.

The micro balance weighing cell, combined with the motion sensor lid and large evaporation trap enable a focused workflow with accurate results right first time. Additional functions such as the StatusLight, the large waste container and optional sensors support an efficient calibration process with trusted results.

Fast & efficient



The motion sensor lid and large 80 ml evaporation trap of the XPE26PC ensure fewer handling steps and fast, stable results even when calibrating micro pipettes down to 1 μl according to ISO 8655.

Continuous calibration



The large 10 ml container allows many calibrations in a large range from 1 μl or higher without interruption. A suction pump is included to easily empty the waste water container.

Unique durable design



Thanks to the unique hanging weighing pan design, the bottom plate is completely sealed and prevents water or fluids dripping into the balance mechanics and weighing cell, for a durable and consistent lifetime performance.



Valid results



The built-in StatusLight™ uses color to indicate intuitively the status of the balance. The green light indicates clearly that the balance is ready for you to begin your next calibration, so you can be sure your results will be valid.

Improve ergonomics



Optimize your process with an optional motion sensor which can be placed freely on the bench for touchless and contamination-free operation of the balance.

Stability increases speed



An optional dual framed weighing table reduces to a minimum any user or environmental vibrations, substantially speeding up measurement times. With this complete solution, pipette calibration is faster than ever.

Calibrate from 20 µl to 10 ml on One Balance

The XPE analytical balances with professional evaporation traps make it possible to calibrate volumes from 20 µl to 10 ml with just one balance, according to ISO8655 quickly and efficiently.

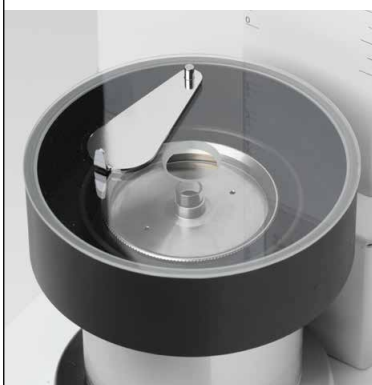
In addition, the unique design with hanging pan and detachable draft shield facilitate optimal working ergonomics and easy cleaning, without the risk of fluids or dirt entering the weighing cell.

From 2 µl to 2000 µl



Glass evaporation traps enable fast calibrations from 20 microliters to 2 milliliters, thanks to the stable setup, good visibility and independent waste container.

From 2 ml to 10 ml

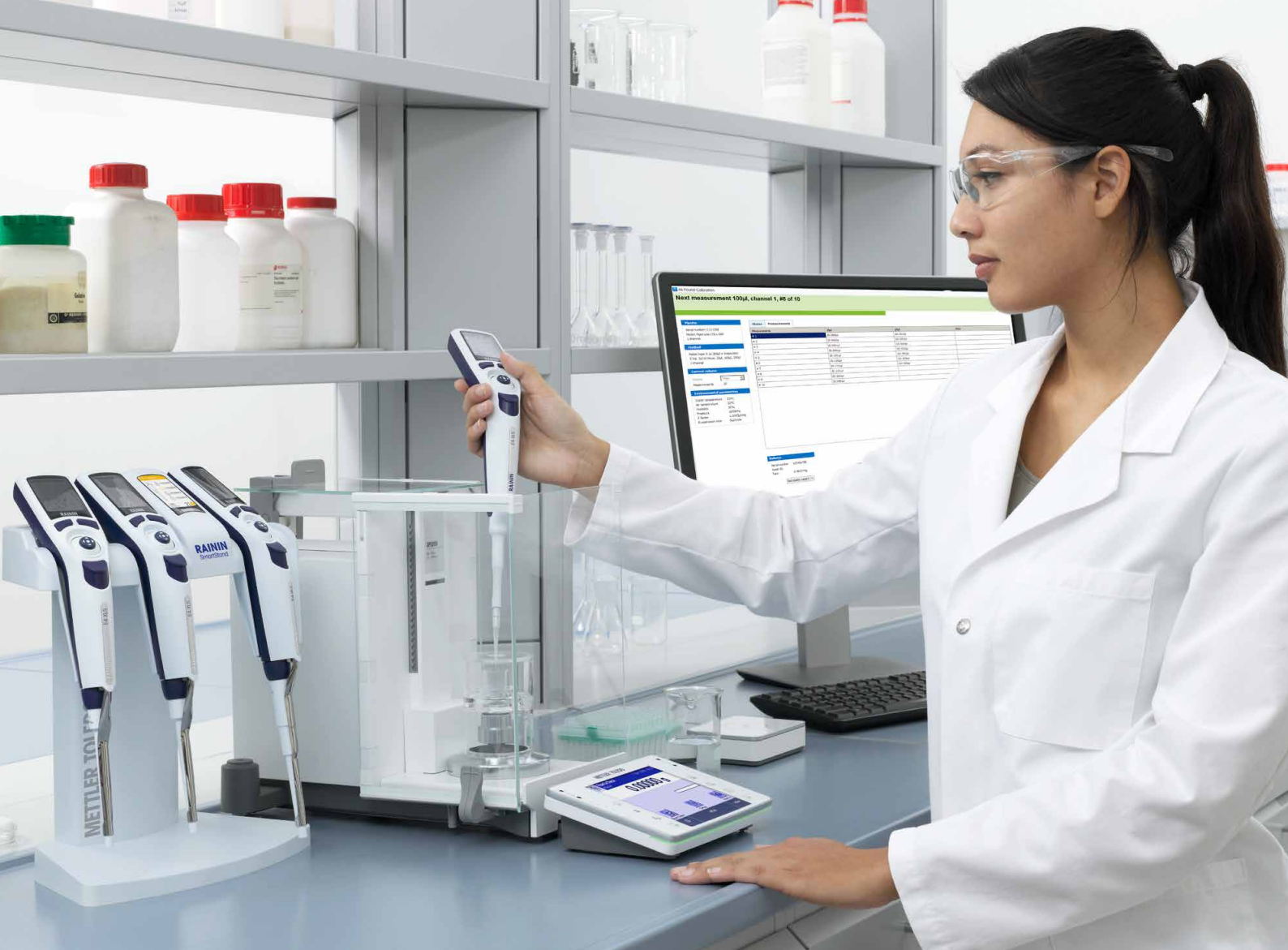


Simply switch the trap to calibrate volumes from 2 to 10 milliliters. The metal 100 milliliter evaporation container is easily exchanged on the XPE analytical balance.

Simply adapt to your needs



The terminal, motion sensor doors and draft shield can simply be detached anytime to improve access and ergonomics or just to make cleaning easier.



Unique construction



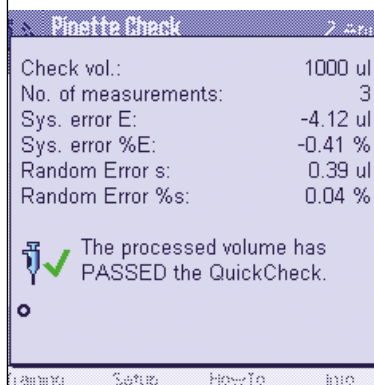
Thanks to the unique hanging waste container, the base is completely sealed which prevents dust, fluids and powder from entering the weighing cell ensuring a lasting performance of your balance.

Easy Leveling



The LevelGuide™ provides you with a warning when the XPE balance is not leveled. Full instructions and a graphical leveling bubble are shown on the touch-screen so you can proceed your calibration within seconds.

Training Day

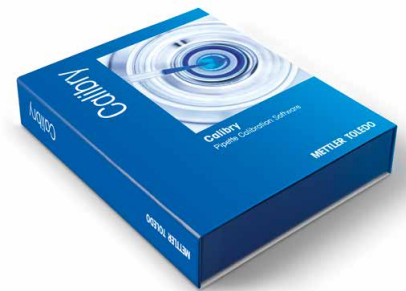


Use the built-in training module and Pipette Check to train users or check pipettes independently of the system. Users are guided through the process and their individual performance can be tracked.

Efficient and Compliant Calibrations with Calibry Software

Calibration task planning, guided calibration processes, collecting data, generating reports and being compliant at the same time, these are the benefits of using Calibry Software – efficiency personified.

Calibry was developed with calibration professionals, who know what is important and necessary in accredited calibration laboratories. With over decades of experience and continuous improvements, Calibry is an established benchmark for many calibration laboratories all over the world.



Guided process



Calibry software supports all steps of the calibration process. The large cockpit screen during calibration ensures an easy and secure calibration process of all pipettes.

Compliant and traceable



Calibry software saves all calibration data in a secure SQL database, and ensures compliance with ISO8655 regulations and reports.

Clever Solutions



RFID Pipettes from Rainin need only to be scanned to initiate a task overview or to start a calibration directly.



MP Micro Comptors
Uniqued Performance

METTLER TOLEDO

Customized reports



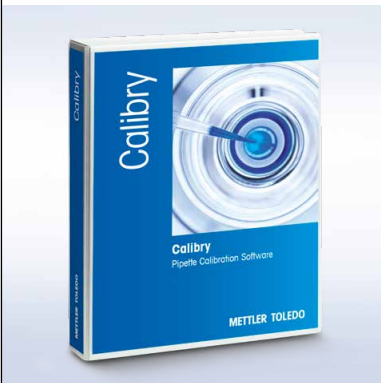
ISO8655 compliant and comprehensive reports can be generated and adapted to specific needs. If required all data can be exported and used to generate custom specific reports as well.

21CFR Part 11 supportive



For regulated areas Calibry contains many FDA 21 CFR Part 11 supportive features, such as user management, report release, method change history and audit trail.

Software validation



The software validation binder saves valuable time for preparation and validation process. Due to the prefilled information and templates, software releases are completed quickly and more accurately.

Pipette Calibration Systems

Technical Information

Built your own Calibration System that suits your needs.
A Calibration System is based on an XPE balance with optional accessories to improve your calibration process. Every balance can be connected to Calibry Software for secure data capture.



	Calibration System XPE26PC	Calibration System XPE205
Calibration range according ISO8655	≥ 1µL – 1'000µL	> 10 µL – 10'000 µL
Balance type	XPE26PC	XPE205
Evaporation trap	Built-in 80 ml	Optional: 20 ml - 11140043 Optional:100 ml - 11138440
Motion Sensor Lid opening	•	-
Motion Sensor Draft Shield doors	-	•
Hanging Pan design with closed bottom plate for safe cleaning	•	•
Detachable draft shield	-	•
Detachable terminal	•	•
LevelControl	•	•
StatusLight	•	•
ProFact internal Temp. & Time adjustment	•	•
Extra Motion Sensor and/or Footswitch	Light Barrier - 11140029	ErgoSens - 11132601
	Footswitch - 11106741	Footswitch - 11106741
Waste water suction pump	•	Optional 11138268
CarePac Test Weight Set	Optional - 11123006	Optional - 11123008
Calibry Software compatability	•	•
Weighing table	Optional - 11138041	Optional - 11138042

• included / - not applicable

Balance



Model	XPE26PC	XPE205
Order no.	30105901	30087653
Typical Pipette Calibration Range*	1 - 200 µl	20 - 10'000 µl
Weighing range	0 - 22 g	0 - 220 g
Readability	0.001 mg	0.01 mg
Repeatability	0.0015 mg	0.015 mg

*) according ISO8655

Evaporation traps



Model	Evaporation Trap 10ml	Evaporation Trap 20 ml	Evaporation Trap 100 ml
Order no.	11140041	11140043	11138440
Compatible with	XPE 26 / 56 Micro balance	XS / XPE Analytical balance	XS / XPE Analytical balance
Typical Calibration Range	1 - 200 µl	20 - 1'000 µl	100 - 10'000 ul
Volume container	10 ml	6 ml & 20 ml	100 ml
Material	Aluminium / POM-esd	Aluminium / Glass	Aluminium / POM-esd

Accessories



Item	Order no.	Item	Order No.
RFID Reader for Calibry Software	30215407	Motion Sensor typ "Light Barrier"	11140029
USB-RS232 Cable	30091827	FootSwitch	11106741
Ethernet Interface	11132515	Weighing Table XPE26PC	11138041
RS232 Interface	11132500	Weighing Table XPE205	11138042
Suction pump with tubes	11138268	CarePac S Testweight set 1g / 20g	11123006
Motion Sensor typ ErgoSens	11132601	CarePac S Testweight set 10g / 200g	11123001

Pipette Data Management



Software functionalities	Calibry Single Station	Calibry Network
Software package, 1 balance license included	11138419	11138420
Windows 7 (SP1), 8 and 10 compatible	•	•
Number of max.balances supported	5	20
Databases to manage Pipettes, Methods and Customers	•	•
Calibration Task Planning with reminder	•	•
Calibration report with customization	•	•
ISO8655 compliant and free definable Methods	•	•
Calibration Methods with split, As Found, Maintenance, As Return data	•	•
Pipette History data and trending of performance	•	•
Z-factor according to ISO8655, TR or custom with formula editor	•	•
Advanced settings for additional uncertainty calculations	•	•
RFID Calibration & Service tracking with MethodCards, SmartTags and Rainin pipettes	•	•
System Testing with balance internal & test weights	•	•
Calibry License Options		
Instrument License 1 - to connect 1 additional balance	30415768	30415768
Instrument License 3 - to connect 3 additional balance	30417326	30417326
Instrument License 5 - to connect 5 additional balances	-	30417327
Instrument License 1 - to connect 1 other brand balance	30421382	30421382
User Management License - to manage user rights	30415770	included
Audit Trail License - to document all system changes	30415771	30415771
Export File license - - to export in XML and MS Office	30417468	included
Capture Tool License - to automatically integrate all enviromental data	30415769	30415769

Expect more from us

With decades of experience in pipetting & weighing METTLER TOLEDO can offer you a wide range of online learning resources. Take advantage of our expertise to enhance your know-how and make the most out of your equipment. Check out the services on our internet for a wide range of relevant services and professional solutions we offer.



Installation and Qualification

Take the stress-free route to meet your productivity, quality and regulatory requirements immediately. Your specific needs can be addressed by choosing the most suitable option from our comprehensive service offering.

► www.mt.com/service



Rainin pipettes – performance you can trust

Its comfortable handle, light springs and “Magnetic Assist™” technology, ensure light and smooth operation, while significantly reducing the risk of repetitive strain injuries. Tip shaft options included low-force LTS™ for improved ergonomics and universal fit.

► www.mt.com/rainin



SmartStand – Never miss a calibration

Avoid costly efforts and retry's with out-of-specification pipettes or those are beyond calibration date. Rainin XLS+ with RFID tags show their status every time you put them on the stand. Combined with the EasyDirect Software you can monitor and manage all pipettes in your lab.

► www.mt.com/smartstand

www.mt.com/pipcal

For more Information

METTLER TOLEDO Group

Laboratory Division

Local contact: www.mt.com/contacts

Subject to technical changes

© 10/2017 METTLER-TOLEDO. All rights reserved

30393683

Global MarCom 2280 LK/PH